



PLEASE NOTE: Your JR Home Products Kennedy or Paramount Fireplace connects only to a **2.4 GHz wireless** connections. Please insure compatibility prior to initial use.

IMPORTANT
Please read this manual carefully and keep it for future reference.

JR Home Products will not be responsible for any problems that could be caused by incompatibility or network issues, your wireless router and mobile phone.

There may be a delay between the update of the OS and a related software update during which your OS may or may not be supported until a new version is released.

Your specific mobile phone or problems in your network may prevent the system from working. JR Home Products will not be responsible for any problems that could be caused by incompatibility or network issues.

1 DOWNLOAD & INSTALL THE APP

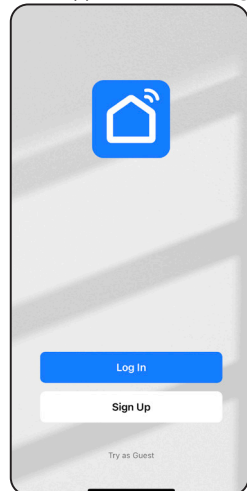
Android and Apple iOS users can scan the QR Code to access the download links at Google Play or the Apple App Store, or search the app stores for "Smart Life" (by Tuya) and download it.



2 CREATE AN ACCOUNT

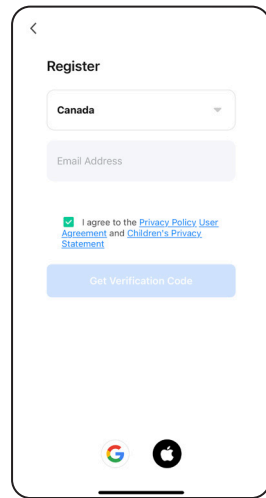
Agree to the privacy and user agreement screens and then create a profile to use the Smart Life App, and connect your fireplace for convenient controls:

1. Ensure you have access to an email.
2. When the app starts, select "Sign Up"

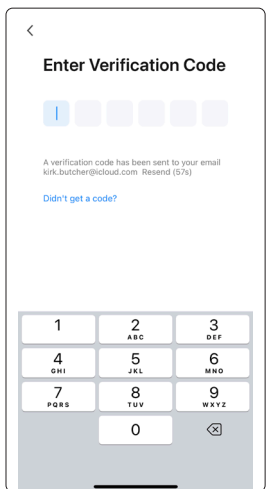


CREATE AN ACCOUNT-continued

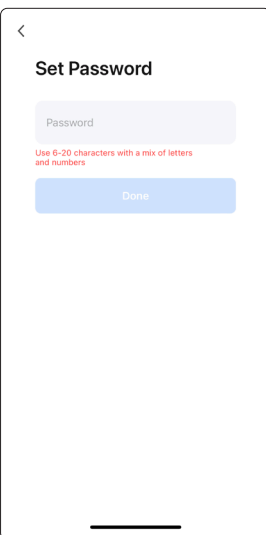
3. Enter an email address where a verification code can be sent and check mark the privacy policy.



4. Enter the verification code sent to your email.



5. Set a Password and click done.



3 FIREPLACE WIFI SETUP

To begin WiFi setup, ensure the fireplace is plugged in and receiving power. Place the fireplace in standby mode (plugged in, flame and heater off).

The control buttons are located at the bottom right of the fireplace (Diagram 1). Press and hold the Flame button (a) for 5 seconds and then release. The Flame Indicator will begin to flash, indicating the fireplace is ready to connect to WiFi.

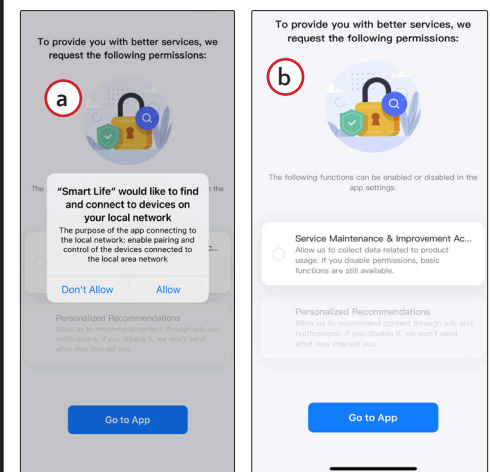
After Wifi connected, the flame indicator will stay ON, and will go OFF until the fireplace is power ON.

DIAGRAM 1



4 Permissions

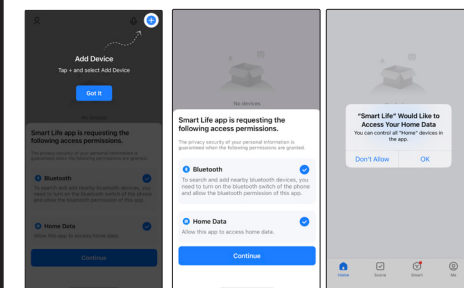
1. Allow Smart life to permissions to connect to your network (a) and to allow device usage for service and improvements to the fireplace (b).



5 ADD THE FIREPLACE

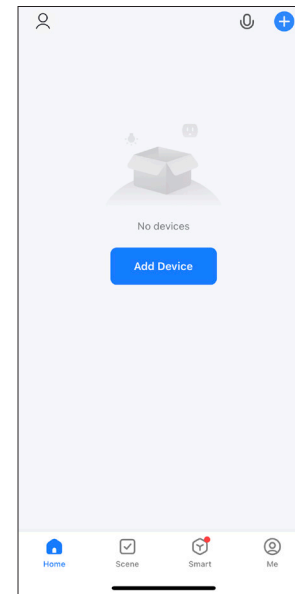
1. Tap "Add Device" and allow the fireplace access through bluetooth (how it communicates to your fireplace). Allow access to home data to allow all the features of the app.

NOTE: The Smart Life App requires these permissions to be allowed to have all features available.

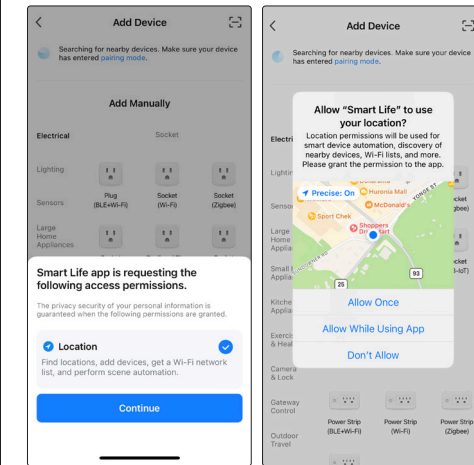


5 ADD THE FIREPLACE -continued

2. Tap "Add Device" to continue the process of adding the fireplace.

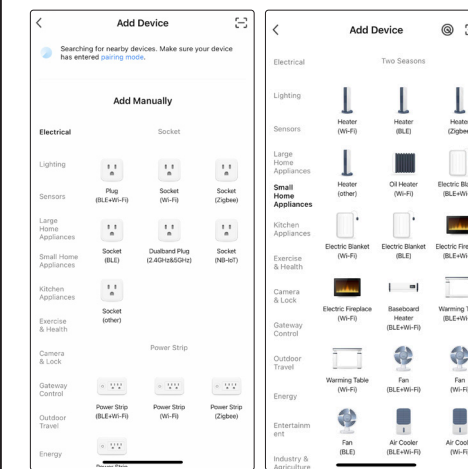


3. Smart Life requires location permissions to operate. Allow the app to use your location so it may search for your nearby Wi-Fi connected fireplace. Automation features, device discovery and Wi-Fi lists require this permission.

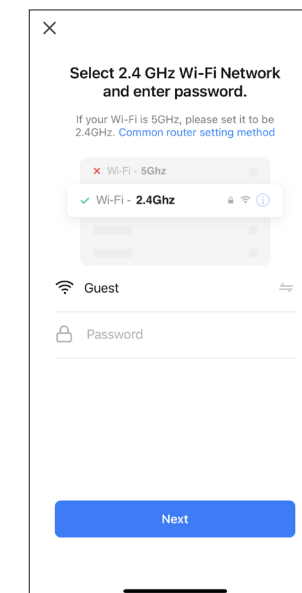


ADD THE FIREPLACE -continued

4. In the category "Small Home Appliance" then select "Electric Fireplace (Wi-Fi)" (NOTE: DO NOT SELECT (BLE+Wi-Fi))



5. Select your home 2.4 GHz network and enter the network password.

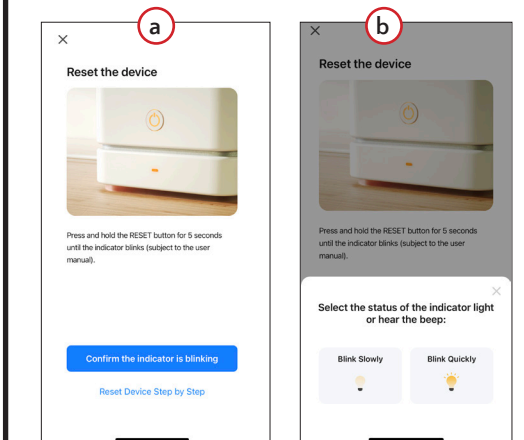


Remember your JR Home Products Kennedy or Paramount Fireplace connects only to a **2.4 GHz wireless** connection.

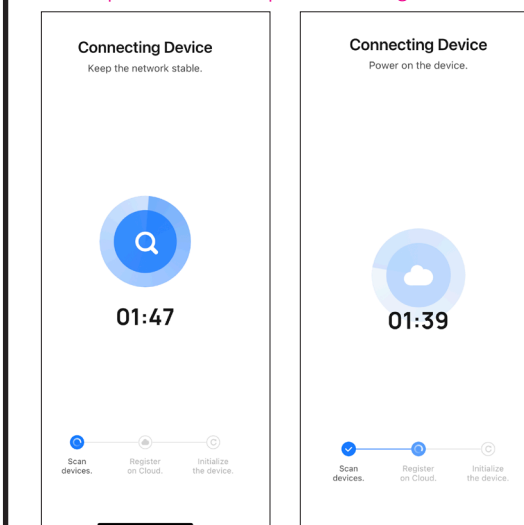


ADD THE FIREPLACE -continued

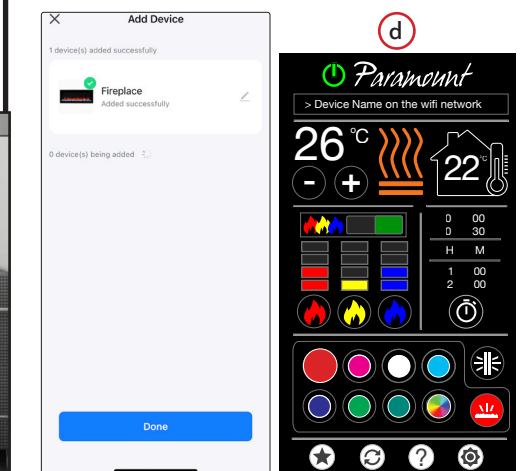
6. Reset the Fireplace and confirm the indicator is blinking (a) on the fireplace and then confirm Blink Status (b)



7. The "Connecting The Device" progress screen confirms Smart Life is scanning for devices and will initialize the fireplace when found. NOTE: Keep the Network connection stable. When complete, turn the fireplace on to begin use.



8. Device has been added to the network, initialized and is ready to control. Tap the Fireplace icon to go to the "Main Control Interface" (d)





Smart Life App Manual

continued



7 CHECK FOR FIRMWARE UPDATE

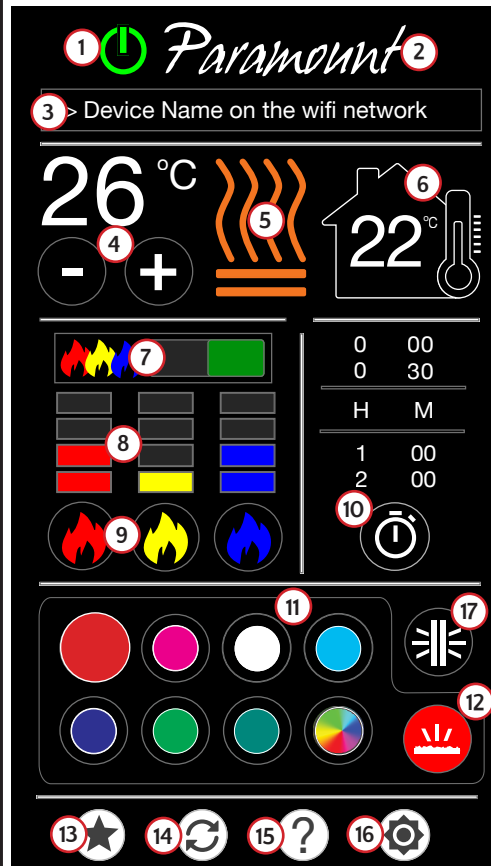
Before updating the fireplace's firmware, please ensure you have a stable internet connection and the fireplace is powered on.

1. In the app, select the device you wish to update.
2. In the device control panel, select the settings icon on the top right, then select "Check for Firmware Update". You will be prompted to start the update if available.

8 CONTROLS VIA 4G/LTE MOBILE NETWORKS

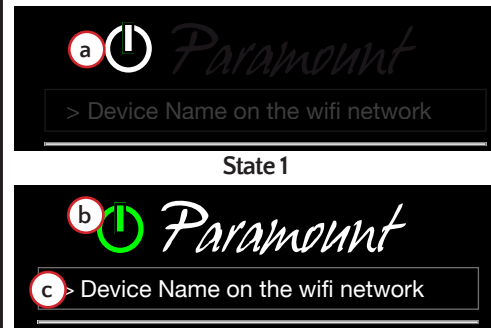
To control the fireplace with your phone's mobile network, you will need to connect the fireplace to your home WiFi and have registered for an account in the app. When your fireplace is connected to your home WiFi and your account, you can now have access to your fireplace even if you are not home.

9 MAIN INTERFACE CONTROL



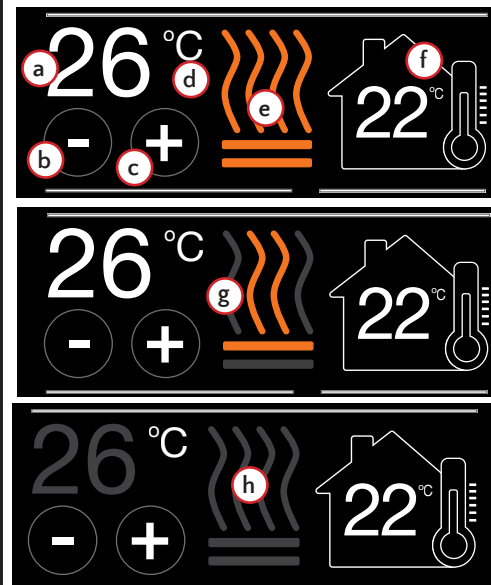
1. Main Power
2. Fireplace Brand
3. Device Name On Wifi Network
4. Temperature Control
5. Heater Control
6. Ambient Room Temperature
7. Flame On/Off Switch
8. Flame Intensity Level Indicator
9. Flame Intensity Control
10. Timer Settings
11. Ember Bed & Backlight Colour Selector
12. Ember Bed Selector
13. Stored Favourite Settings
14. Restore Favourite Setting/ Default
15. Help
16. Settings
17. Backlight Control

10 POWER AND DEVICE CONTROL



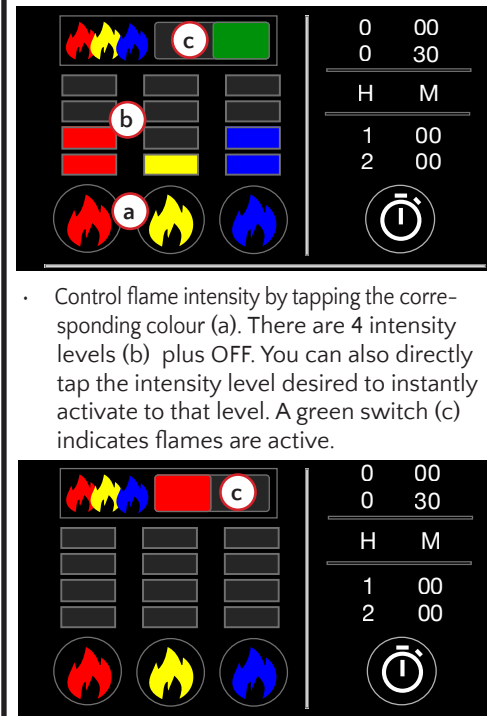
- Prior to turning on the fireplace, no functions are active (State 1). Tap the POWER BUTTON (a) to turn the fireplace ON or OFF. When ON (State 2) the Power button turns green (b). The first time you use the fireplace, the default setting is displayed (flames at max levels and the ember bed colour is white).
- Subsequent uses of the fireplace will display the last active setting when turned ON.
- When connected to WiFi, the fireplaces default name on the network is shown (b). Tap the field to change the fireplace name or select a different connected fireplace.

11 TEMPERATURE AND HEATING



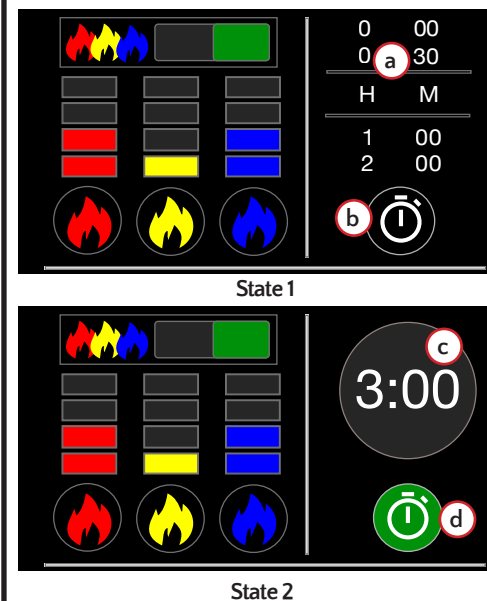
- Display (f) shows the current ambient room temperature. To increase or decrease the temperature tap the minus (b) or plus (c) sign. The fireplace will warm the room to that temperature and hold that temperature automatically (a).
- The minimum temperature is 16C/61F, the maximum temperature is 30C/86F. Temperature is set by 2 degree intervals.
- There are 2 heater settings. Tap (e) to control. 1500W- 2 heaters are active (e), 750 W (single heater active (g) or heaters off (h).
- Note: Celsius or Fahrenheit degrees (d) is controlled in settings See "15 FAVOURITE, RESET, HELP AND SETTINGS

12 FLAME COLOR AND INTENSITY



- Control flame intensity by tapping the corresponding colour (a). There are 4 intensity levels (b) plus OFF. You can also directly tap the intensity level desired to instantly activate to that level. A green switch (c) indicates flames are active.
- Tap switch (c) to instantly deactivate all active colours. The switch will turn red. Tap Switch (c) again to re-activate colour states and intensities to their most recent state.

13 SELF TIMER

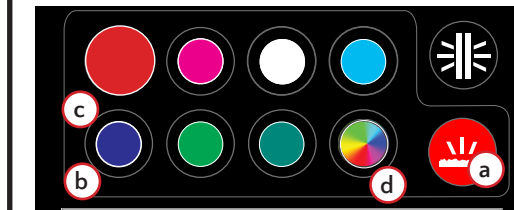


- Scroll through the timer interval options to select the time desired from off (00) to 30 minutes to 8 Hours, in 1 hour intervals (See State 1). Tap the timer button (b) to start the timer once an interval is chosen. Once activated a count down timer (c) replaces the timer interval display (see continued....)

SELF TIMER - continued

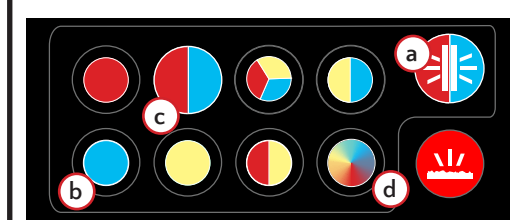
- continued.
- State 2) At the end of the interval time the fireplace will shut off ALL active unctons and return to State 1.
- Pressing the Green timer button (d) in State 2 will stop the countdown timer and reset all timer functions to State 1.

14 EMBER BED COLOUR CONTROL



- Tap the ember bed (a) to activate colour choice. Tap again to turn OFF.
- Tap to choose the colour (b) to display in the ember bed. Once tapped, the selected colour will then fill the button (c) and change the colour of the ember bed and ember bed icon (a) to match.
- Select the auto-rotating colour function (d) to rotate through all colours over 30 seconds in sequence. Stop by choosing another colour in the ember bed control or by turning off the ember bed lights by tapping the ember bed icon (a).

15 BACKLIGHT COLOUR CONTROL



- Tap the background (a) to activate colour choice. Tap again to turn OFF.
- Tap to choose the colour (b) to display in the background. Once tapped, the selected colour will then fill the button (c) and change the colour of the background and background icon (a) to match.
- Select the auto-rotating colour function (d) to rotate through all colours in sequence every 30 seconds. Stop by choosing another colour in the background control or by turning off the background lights by tapping the background icon (a)

16 FAVOURITE, RESET, HELP AND SETTINGS



- Tap the Store Favourites icon (a) to save all current colour settings and intensity levels as a favourite. Once a setting is saved the icon will turn green indicating a saved favourite.
- Tapping the Stored Favourite button will replace a previously stored favourite with the currently active colour and intensity levels as the favourite.
- The Restore Favourites icon (b) will set the fireplace to your stored favourite setting. Press and hold the button for 3 seconds to display the initial default setting (all flames on at maximum levels with the ember bed colour set to white).
- The Help button (c) will launch your browser to the JR Home Smart Flame connect app page for troubleshooting, warranty registration and more. An internet connection is required.
- Settings (d) allows you to save Fahrenheit or Celsius as your preferred temperature scale.

